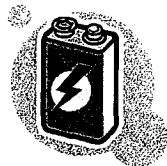


# Spring Clean Sweep Pesticide & Household Hazardous Waste Collection in the Imlay City Area

for all Lapeer County Residents  
Saturday, April 9, 2016



It's time to clean out your garage, basement, barn, or shed and call **Lapeer County MSU Extension** to register.



You **MUST** pre-register for an appointment to participate.



**NO** materials will be accepted without an appointment.

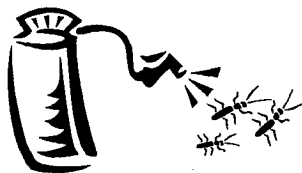


**NO** materials will be accepted at the Lapeer County MSU Extension office.

**Registration Deadline: Friday, April 1, 2016 Call (810) 667-0341**

**ACCEPTABLE ITEMS:** Farm & household chemicals that are toxic (poisonous), flammable, caustic (causes burns), corrosive, or chemically reactive...

- \* All pesticides (insecticides, herbicides, fungicides, fumigants)
- \* Mercury
- \* Antifreeze
- \* Drain cleaners
- \* Pool chemicals
- \* Turpentine/shellac
- \* Oil based paint & thinners only
- \* Household batteries
- \* Fluorescent tubes



## **Non-Acceptable Items:**

- Latex or enamel paint
- Smoke detectors
- Ammunition/explosives
- Prescription medications
- Appliances
- Rustoleum
- Car batteries
- Biohazards (syringes)
- Tires
- Motor oil
- Gasoline

**MICHIGAN STATE**  
UNIVERSITY

**Extension**

MSU is an affirmative-action, equal-opportunity employer. Michigan State University Extension programs and materials are open to all without regard to race, color, national origin, gender, gender identity, religion, age, height, weight, disability, political beliefs, sexual orientation, marital status, family status or veteran status.